

Utility Worker

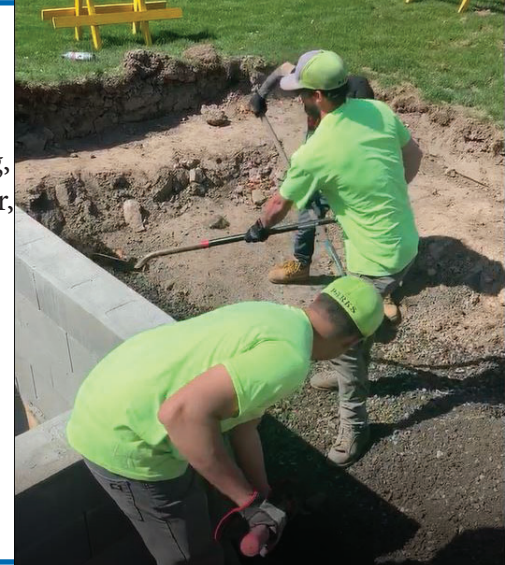
City of Pendleton

Parks, Recreation, and Cemetery Department

The City of Pendleton Parks and Recreation Department is seeking enthusiastic, high-energy candidates to fill a Utility Worker position within the Parks Department. The salary range for the position is \$41,328-\$55,632 annually with excellent benefits.

Position Summary

Utility Workers within the Parks and Recreation Department are responsible for serving the citizens and visitors of the City of Pendleton by performing a wide range of maintenance and construction tasks in the parks and cemetery, including but not limited to: mowing, weed trimming, herbicide application, landscaping, tree trimming, irrigation repair, equipment maintenance, excavation, funeral services, restroom repair, graffiti removal, and painting. The Utility Workers are responsible for all parks maintenance activities within an assigned zone. Zones generally encompass multiple parks and public landscaping areas. The right candidate will be someone who takes ownership over his or her assigned area and takes pride in making it the best experience possible for the public. Due to the size of the parks system in Pendleton, supervisors are unable to inspect each park every week, therefore, we need someone who is a self-starter that can identify and correct issues as part of their regular maintenance route without having to wait for direction.



What does a normal day look like for a parks crew member?

- Days start early. Depending on the time of year, the crew starts between 6am and 7am, ends at 2:30pm or 3:30pm, with a 30 minute lunch and two 15 minute breaks.
- During the mowing season, the mornings generally start with daily mower maintenance and equipment preparation.
- Staff then head out into the field and, depending on the zone, the Utility Worker may be accompanied by one or two seasonal laborers.
- At each park, the Utility Worker is responsible for mowing grass, edging walkways, pruning and weeding landscaped areas, spot spraying weeds, raking playground woodchips, trash removal, graffiti cleanup, and addressing any unexpected issues to ensure the park is always attractive, clean, and safe for residents and visitors of Pendleton. The spring and summer seasons often require long, strenuous days in hot weather.
- The fall season focuses mainly on leaf removal and mulching, as well as general maintenance tasks.
- The winter season includes snow removal on pathways in parks and facilities. This sometimes requires coming in earlier than regularly scheduled and performing physically demanding work in cold weather. Winter also includes big maintenance projects such as refurbishing bathrooms and an overhaul of equipment.
- Generally, one Utility Worker's primary function is Cemetery maintenance and services, however, it is expected that all Parks Utility Workers become proficient in Cemetery Operations, including digging graves and performing burials.
- Training will be provided. Prior cemetery experience is a bonus but not required.
- Throughout the year, the Parks crew have the responsibility to maintain public spaces in a clean sanitary condition, this includes regular trash pickup, urban camp cleanup, and removal of illegally dumped items.
- All year long, Utility Workers are part of the larger Parks and Recreation Department team. Sometimes, Utility Workers will aide other divisions when they need assistance. For example, the Utility Worker may assist in the physical setup or takedown of a recreation event.

