

Shelter-in-Place for Active Shooter

When disaster strikes, it may be safer to stay in your home, place of employment, or other location. Learn where to go, what to do, and how long you should shelter-in-place for the hazards in your area.

An active shooter is an individual engaged in attempting to kill people in a confined space or populated area. Active shooters typically use firearms and have no pattern to their selection of victims

Take Additional Safety Measures

If you see suspicious activity, let an authority know right away.

When you visit a building such as a shopping mall or healthcare facility, take time to identify two nearby exits. Get in the habit of doing this.

Map out places to hide. In rooms without windows, behind solid doors with locks, under desks, or behind heavy furniture.

Many places, such as houses of worship, workplaces, and schools, have plans in place to help you respond safely. Ask about these plans and get familiar with them.

If you participate in an active shooter drill, talk with your family about what you learned and how to apply it to other locations.

Run. Hide. Fight.



First Officers on scene will not stop to help the injured.

Their priority is to end the incident as fast as possible. Rescue teams will move in after the first officers and will treat and move the injured to safety.

Run



- **Get away** That is your top priority!
- **Leave** behind any belongings.
- **Help** others if you can, but you must escape.
- **Warn** others to stay away from the area.
- **Call 9-1-1** when you are safe.

Hide



- **Stay out** of the shooter's view.
- **Lock and block** entrances and turn off lights.
- Groups of people should spread out when hiding.
- **Text 9-1-1** and text message others to silently communicate.
- **Stay in place** until given the all-clear signal.

Silence electronic devices and make sure they don't vibrate.

Devices that buzz or ring will bring attention to places of hiding.

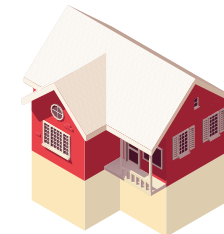
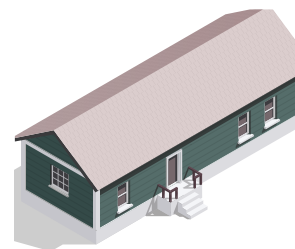
If you are in a **Manufactured or Mobile Home**

If you are in a **1- or 2-Story Building**

May have an attic and/or basement

If you are in a **Multistory Building**

Includes schools, apartments, and offices



For all structures

- stay inside
- lock and block the doors
- close blinds
- turn off all the lights

Fight as a last resort!



- **Commit to your actions.** Fight. Do not hesitate.
- **Be prepared** to inflict severe injury to shooter.
- **Throw objects** or improvise weapons (staplers, scissors, chairs).

How long to shelter-in-place?



Stay in place until law enforcement gives you notice that the danger is over.